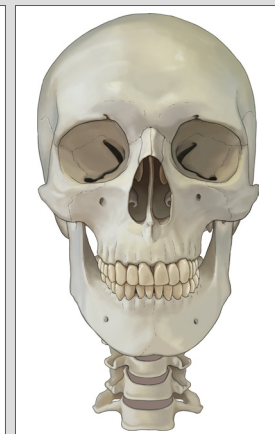
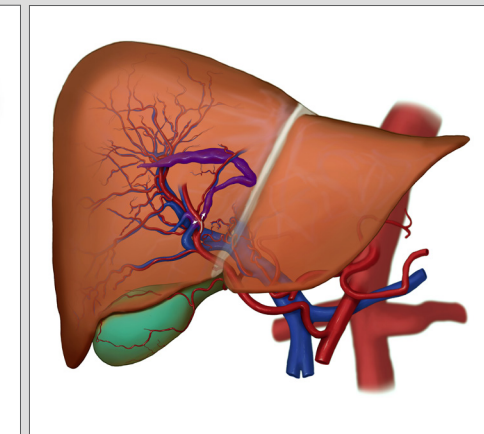
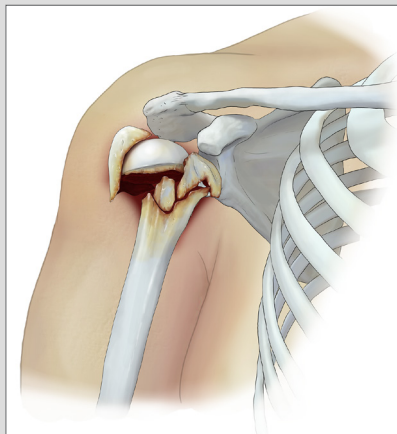
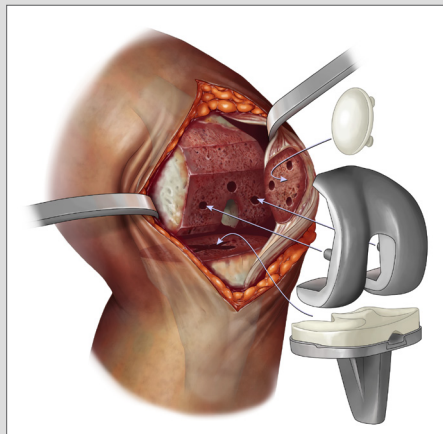
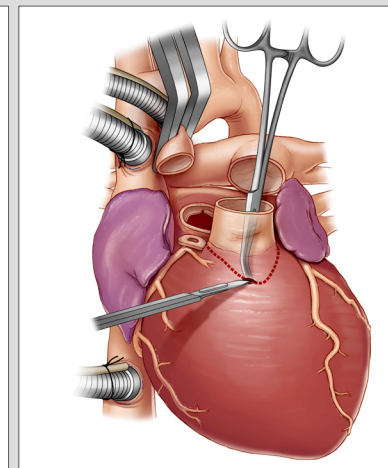
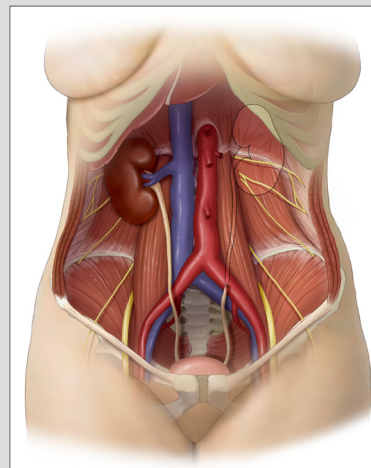
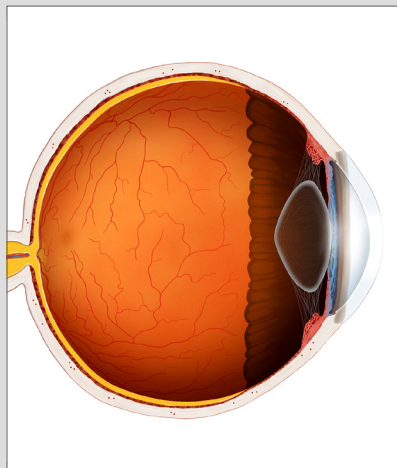
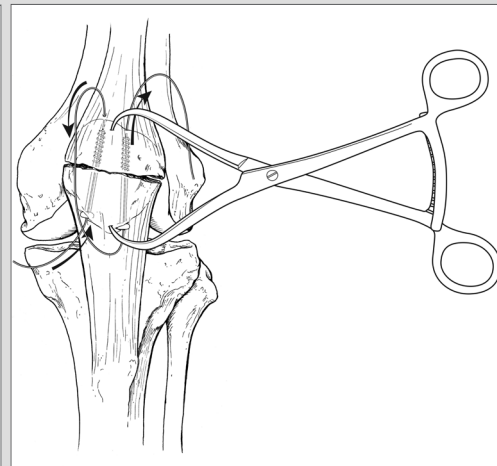
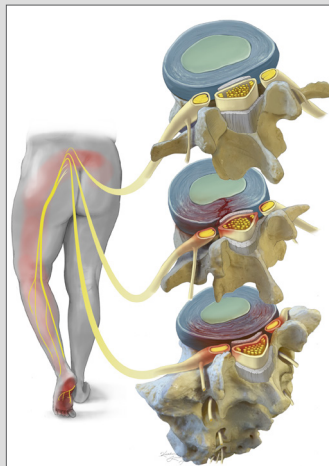
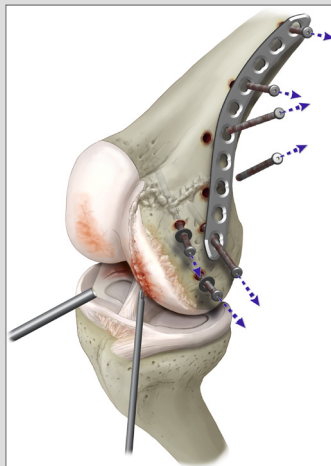
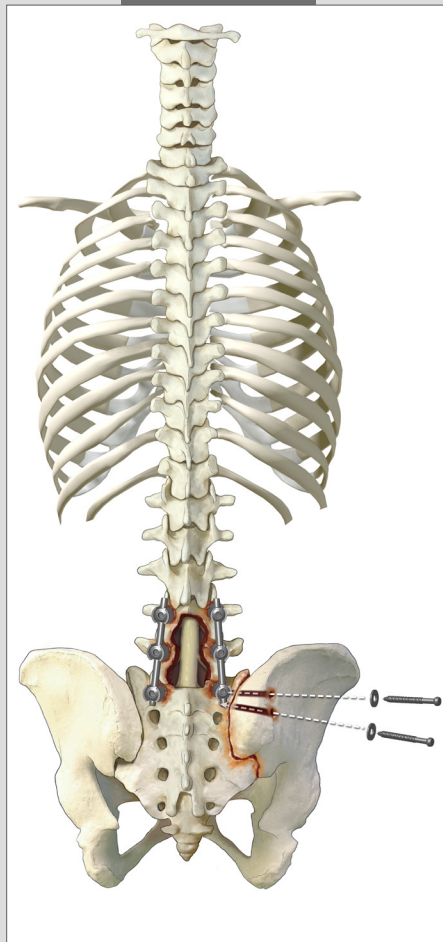


# Surgical & Anatomical Illustration Service

Art for Presentation, Publication, & Patient Education

Color, Tone, & Line



**Kaitlin Lindsay, MA, CMI**  
Medical and Biological Illustration

KaitlinLindsay.com  
308.293.6828

**C.M.I.**  
BOARD  
CERTIFIED  
MEDICAL  
ILLUSTRATOR



**ASSOCIATION of  
MEDICAL ILLUSTRATORS**  
Illuminating the Science of Life  
Professional Member